

ADOPTED, 1955
 THE CAESARSCREEK TOWNSHIP BOARD OF TRUSTEES
 G.A. DEVOE W.P. BAYMARD A.J. LUMPKIN
 AMENDED BY
 THE CAESARSCREEK TOWNSHIP ZONING COMMISSION
 EARL SOWARD LUCILLE SWINDLER

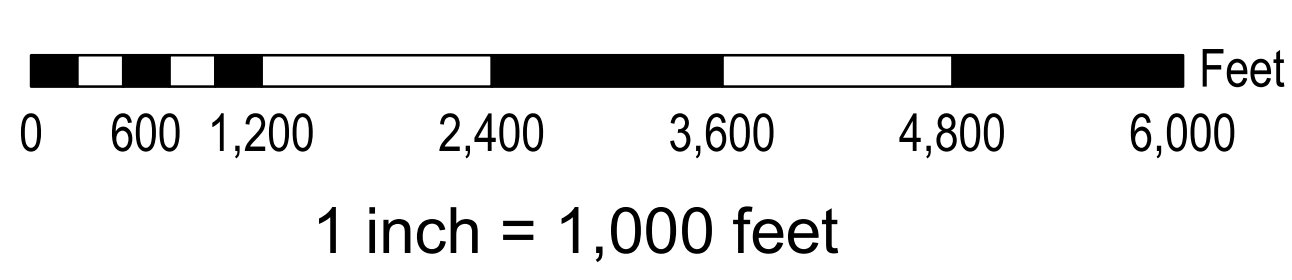
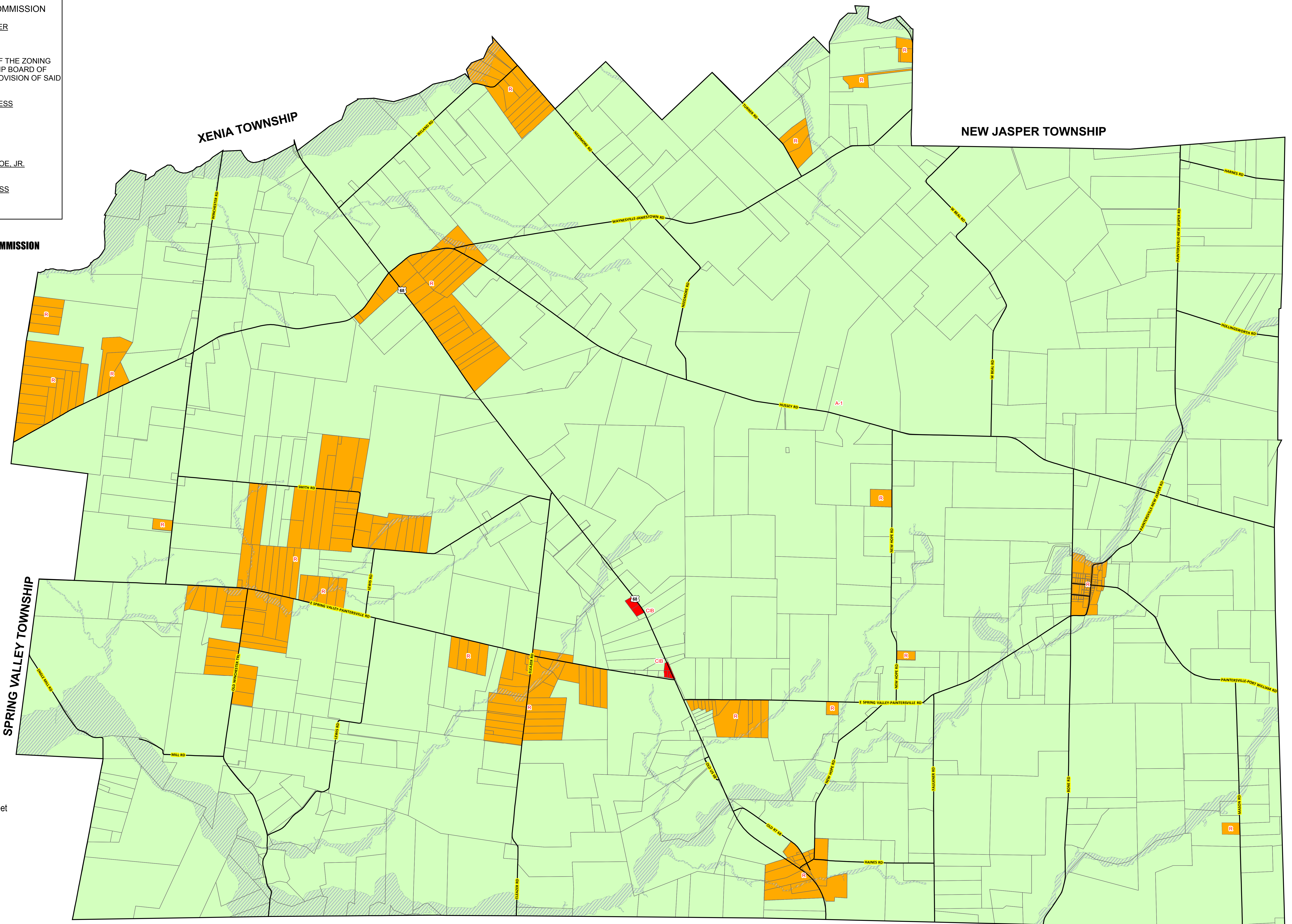
THIS IS TO CERTIFY THAT THIS IS A TRUE COPY OF THE ZONING MAP AMENDED BY THE CAESARSCREEK TOWNSHIP BOARD OF TRUSTEES ON MARCH 13, 1967 AND THAT THE PROVISION OF SAID MAP BECAME EFFECTIVE ON APRIL 13, 1967.

J.C. MILLER
 CHAIRMAN
 EVA VAN TRESS
 CLERK

REVISED
 SEPTEMBER 2, 1975

RANDALL PICKERING
 CHAIRMAN
 GLEN W. DEVOE, JR.
 TRUSTEE

KENNETH M. PENEWIT
 TRUSTEE
 EVA VAN TRESS
 CLERK



- Caesarscreek Township Zoning Districts**
- A-1 - AGRICULTURAL DISTRICT
 - CIB - COMBINED INDUSTRIAL BUSINESS DISTRICT
 - F-1 - FLOOD PLAIN OVERLAY DISTRICT
 - R - RURAL RESIDENTIAL DISTRICT

MAP PRODUCED BY GREENE COUNTY GIS - JUNE 2015

OFFICIAL ZONING DISTRICT MAP CAESARSCREEK TOWNSHIP GREENE COUNTY, OHIO